

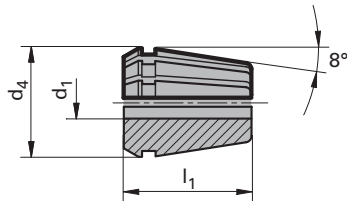
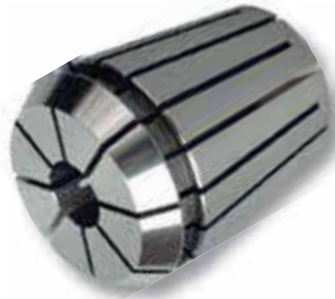
Collets DIN ISO 15488

Product information

- the application range of collet, Guhring no. 4307, is from nom.- \varnothing d1 to the next dimension below, i.e. for \varnothing 6.3 mm (nom. size ER20) order collet d1 = 7.0 mm (code no. 07,020).

Ordering example:

\varnothing d1 = 2.5
 nom. size = ER 20
 Guhring no./Code no. = 4307 02,520



Series Number					4307
nominal size d ₂	d ₁ mm	Clamping Range	l ₁ mm	Order Code	EDP Numbers
ER11	1	1 to 0.5	18	1.011	9043070010110
ER11	1.5	1.5 to 1	18	1.511	9043070015110
ER11	2	2 to 1.5	18	2.011	9043070020110
ER11	2.5	2.5 to 2	18	2.511	9043070025110
ER11	3	3 to 2.5	18	3.011	9043070030110
ER11	4	4 to 3	18	4.011	9043070040110
ER11	5	5 to 4	18	5.011	9043070050110
ER11	6	6 to 5	18	6.011	9043070060110
ER11	7	7 to 6	18	7.011	9043070070110
ER16	1	1 to 0.5	27.5	1.016	9043070010160
ER16	1.5	1.5 to 1	27.5	1.516	9043070015160
ER16	2	2 to 1.5	27.5	2.016	9043070020160
ER16	2.5	2.5 to 2	27.5	2.516	9043070025160
ER16	3	3 to 2.5	27.5	3.016	9043070030160
ER16	4	4 to 3	27.5	4.016	9043070040160
ER16	5	5 to 4	27.5	5.016	9043070050160
ER16	6	6 to 5	27.5	6.016	9043070060160
ER16	7	7 to 6	27.5	7.016	9043070070160
ER16	8	8 to 7	27.5	8.016	9043070080160
ER16	9	9 to 8	27.5	9.016	9043070090160
ER16	10	10 to 9	27.5	10.016	9043070100160
ER20	1	1 to 0.5	31.5	1.020	9043070010200
ER20	1.5	1.5 to 1	31.5	1.520	9043070015200
ER20	2	2 to 1.5	31.5	2.020	9043070020200
ER20	2.5	2.5 to 2	31.5	2.520	9043070025200
ER20	3	3 to 2.5	31.5	3.020	9043070030200
ER20	4	4 to 3	31.5	4.020	9043070040200
ER20	5	5 to 4	31.5	5.020	9043070050200
ER20	6	6 to 5	31.5	6.020	9043070060200
ER20	7	7 to 6	31.5	7.020	9043070070200
ER20	8	8 to 7	31.5	8.020	9043070080200
ER20	9	9 to 8	31.5	9.020	9043070090200
ER20	10	10 to 9	31.5	10.020	9043070100200
ER20	11	11 to 10	31.5	11.020	9043070110200
ER20	12	12 to 11	31.5	12.020	9043070120200
ER20	13	13 to 12	31.5	13.020	9043070130200
ER25	1	1 to 0.5	34	1.025	9043070010250
ER25	1.5	1.5 to 1	34	1.525	9043070015250
ER25	2	2 to 1.5	34	2.025	9043070020250