

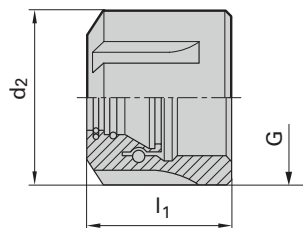
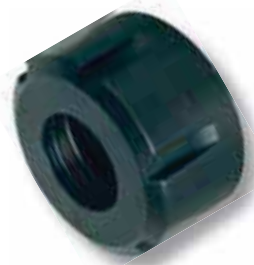
## Retaining nuts, system DIN ISO 15488

### Product information

- for collets DIN ISO 15488
- for increased clamping version IC/ER for glide ring
- for application with internal cooling with sealing washer Guhring no. 4335

### Scope of delivery

- increased clamping force version:  
incl. glide ring
- version for internal cooling IC/ER:  
order sealing washer Guhring no. 4335 separately



Series Number							4306
for sealing washer no. 4335	with glide ring	nominal size	d <sub>2</sub> mm	l <sub>1</sub> mm	G	max. torque	EDP Numbers
—	—	ER16 mini	22	18.0	M19x1.0	55	9043060162000
—	—	ER20 mini	28	19.0	M24x1.0	75	9043060202000
—	—	ER25 mini	35	20.0	M30x1.0	100	9043060252000
—	—	ER11 (4008E)	19	11.3	M14x0.75	25	9043060110000
—	—	ER16 (426E)	28	17.5	M22x1.5	55	9043060160000
—	—	ER20 (428E)	34	19.0	M25x1.5	75	9043060200000
—	—	ER25 (430E)	42	20.0	M32x1.5	100	9043060250000
—	—	ER32 (470E)	50	22.5	M40x1.5	140	9043060320000
—	—	ER40 (472E)	63	25.5	M50x1.5	200	9043060400000
x	—	IC/ER16 mini	22	22.0	M19x1.0	55	9043060163000
x	—	IC/ER20 mini	28	24.0	M24x1.0	75	9043060203000
x	—	IC/ER25 mini	35	25.0	M30x1.0	100	9043060253000
x	—	IC/ER16	28	22.5	M22x1.5	55	9043060166000
x	—	IC/ER20	34	24.0	M25x1.5	75	9043060206000
x	—	IC/ER25	42	25.0	M32x1.5	100	9043060256000
x	—	IC/ER32	50	27.5	M40x1.5	140	9043060326000
x	—	IC/ER40	63	30.5	M50x1.5	200	9043060406000
—	x	ER16	28	20.3	M22x1.5	55	9043060164000
—	x	ER20	34	21.8	M25x1.5	75	9043060204000
—	x	ER25	42	22.4	M32x1.5	100	9043060254000
—	x	ER32	50	25.0	M40x1.5	140	9043060324000
—	x	ER40	63	28.3	M50x1.5	200	9043060404000
x	x	IC/ER16	28	22.7	M22x1.5	55	9043060165000
x	x	IC/ER20	34	24.2	M25x1.5	75	9043060205000
x	x	IC/ER25	42	25.2	M32x1.5	100	9043060255000
x	x	IC/ER32	50	27.4	M40x1.5	140	9043060325000
x	x	IC/ER40	63	30.7	M50x1.5	200	9043060405000