

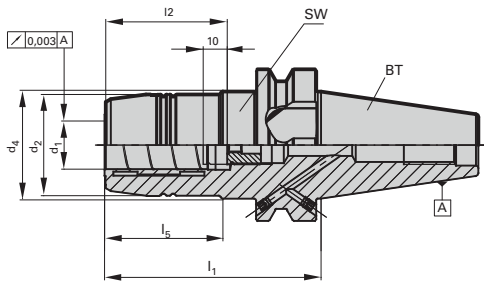
MAS/BT hydraulic chucks with increased clamping force

Product information

- balancing quality: G6.3 / 15,000 rev./min
- axial length setting
- max. deviation f. concentricity 3 µm
- for tool shank tolerance h6
- MAS/BT to JIS B 6339 form AD/B
(*: version AD without coolant supply over collar)

Scope of delivery

- incl. adjustment screw Guhring no. 4900
- incl. hexagon chuck key Guhring no. 4912
- order pull studs Guhring no. 4927, 4928 separately



Series Number **4221**

BT	for shank Ø d _{1h6} mm/inch	d ₂ mm/inch	d ₄ mm	l ₁ mm	l ₂ mm	l ₅ mm	incl. setting screw 4900 ...	SW	kg	Order Code	EDP Numbers
30*	6	26	-	51	37	18	9049000060140	4	0.60	6.030	9042210060300
30*	8	28	-	51	37	18.5	9049000120140	4	0.60	8.030	9042210080300
30*	10	30	-	51	41	19	9049000100140	4	0.60	10.030	9042210100300
30*	12	32	-	51	46	19.5	9049000120140	4	0.60	12.030	9042210120300
30*	16	38	-	90	49	50	9049000160140	4	1.00	16.030	9042210160300
30*	20	42	-	90	51	50	9049000201140	5	1.00	20.030	9042210200300
30*	1/4	26	-	75	37	52	9049000060140	4	1.00	106.030	9042211060300
30*	3/8	30	-	80	41	57	9049000120140	4	1.00	109.030	9042211090300
30*	1/2	32	-	90	46	50	9049000120140	4	1.00	112.030	9042211120300
30*	5/8	38	-	90	49	50	9049000160140	4	1.00	115.030	9042211150300
30*	3/4	40	-	90	49	50	9049000160140	5	1.00	119.030	9042211190300
40	6	26	44.5	90	37	43	9049000060140	5	0.25	6.040	9042210060400
40	8	28	44.5	90	37	44.5	9049000080140	5	0.45	8.040	9042210080400
40	10	30	44.5	90	41	44.5	9049000100140	5	0.70	10.040	9042210100400
40	12	32	44.5	90	46	44.5	9049000120140	5	1.40	12.040	9042210120400
40	14	34	44.5	90	46	44.5	9049000120140	5	0.14	14.040	9042210140400
40	16	38	44.5	90	49	47.5	9049000160140	5	0.18	16.040	9042210160400
40	18	40	44.5	90	49	47.5	9049000160140	5	0.23	18.040	9042210180400
40	20	49.5	-	72.5	51	45.5	9049000201140	6	1.40	20.040	9042210200400
40	20	42	44.5	90	51	47.5	9049000201140	6	1.50	20.140	9042210201400
40	25	49.5	49.5	83	57	56	9049000201140	6	0.42	25.040	9042210250400
40	32	63	80	83	61	25.5	9049000201140	6	0.68	32.040	9042210320400
50	12	32	44.5	90	46	34	9049000120500	5	0.12	12.050	9042210120500
50	20	42	44.5	90	51	34	9049000200500	6	4.00	20.050	9042210200500
50	32	72	72	90	61	-	9049000320500	6	4.10	32.050	9042210320500