

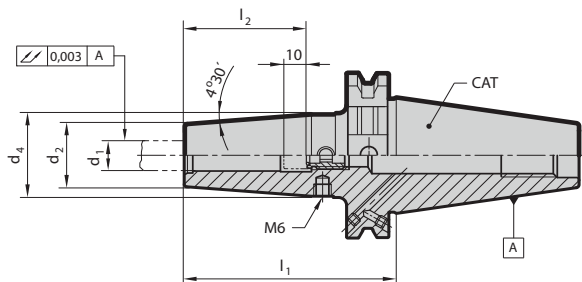
# CAT GUHROJET shrink fit holder

## Product information

- Optimized cooling for tools without internal coolant ducts
- Good chip evacuation and increased process reliability
- Balancing quality G6.3 / 15.000rev./min.
- Including balancing threads 4x M6 / 6xM6
- Taper according to ANSI/ASME B 5.50
- Coolant through center and also through flange (plugged with threaded pins when supplied)
- CAT 40 - 5/8 x 11 retention knob thread
- CAT 50 - 1" x 8 retention knob thread

## Scope of delivery

- Including setting screw, Guhring no. 4938 with slots for coolant supply
- Special dimensions on request



Series Number

4765

| CAT | clamping dia. d1 in h6 inch | d <sub>2</sub> mm | d <sub>4</sub> mm | l <sub>1</sub> mm | l <sub>2</sub> mm | incl. setting screw Guh. no. Code no. | Order Code | EDP Numbers   |
|-----|-----------------------------|-------------------|-------------------|-------------------|-------------------|---------------------------------------|------------|---------------|
| 40  | 1/4                         | 21                | 27                | 80                | 36                | 9049770060140                         | 106.040    | 9047651060400 |
| 40  | 3/8                         | 24                | 32                | 80                | 41                | 9049770080140                         | 109.040    | 9047651090400 |
| 40  | 1/2                         | 24                | 32                | 80                | 46                | 9049770120140                         | 112.040    | 9047651120400 |
| 40  | 5/8                         | 27                | 34                | 80                | 49                | 9049770160140                         | 115.040    | 9047651150400 |
| 40  | 3/4                         | 33                | 42                | 80                | 49                | 9049770160140                         | 119.040    | 9047651190400 |
| 50  | 3/8                         | 24                | 32                | 80                | 41                | 9049770080140                         | 109.050    | 9047651090500 |
| 50  | 1/2                         | 24                | 32                | 80                | 46                | 9049770120140                         | 112.050    | 9047651120500 |
| 50  | 3/4                         | 33                | 42                | 80                | 49                | 9049770160140                         | 119.050    | 9047651190500 |
| 50  | 1                           | 44                | 53                | 100               | 57                | 9049770201140                         | 125.050    | 9047651250500 |

## A gripping principle

When shrink fitting tools into shrink fit chucks, the decisive factors for ensuring the safe clamping of the tool in the tool holder are solely the heating and cooling of the tool holder. The heating process expands the shrink fit chuck enabling a tool to be inserted or withdrawn respectively. During the cooling process it contracts again and clamps the inserted tool with maximum clamping force.

Because the shrink fit chucks can become extremely hot in localized areas during the heating process and the tools shrink fitted for insertion or withdrawal respectively possess very sharp cutting edges, it is important that the operator wears Kevlar® gloves during the shrink fit operation to prevent burns and cuts to the hands.

