

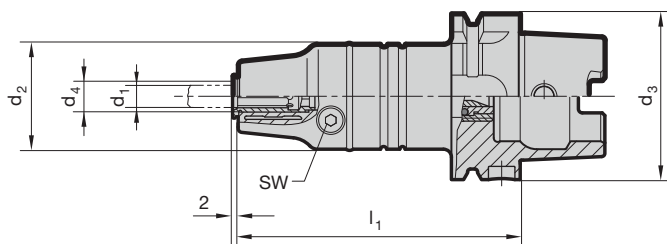
ML HSK-A hydraulic synchro tapping chucks for manual tool change

Product information

- for ML single and double channel systems
- ML coolant pressure up to max. 16 bar
- compensates synchronisation errors
- guarantees high thread quality and optimal tool life
- minimal length compensation in tension and compression direction balances very small pitch differences between synchro spindle and tap
- reduces an increase in axial forces during the cutting cycle to a minimum
- convenient hydraulic clamping using reduction sleeves with active drive
- length-setting screw allows 3 mm readjustment
- Guhring ML identifiable by green colored ring

Scope of delivery

- incl. hexagon clamping key
Guhring no. 4912
- incl. ML coolant delivery set for manual tool change (filler)
Guhring no. 4513
- incl. adjustment key for ML adjustment screws
- order ML adjustment screw
Guhring no. 4305 separately
- order reduction sleeves Guhring no. 4605 or 4606 separately



Series Number

4604

HSK-A d ₃	d ₄ mm	for shank-Ø d ₁	for thread	d ₂ mm	l ₁ mm	tension/ compr. ± mm	SW	kg	Order Code	EDP Numbers
63	12	2.8 to 10	M3 to M12	40	106.5	0.3	4	1.5	12.063	9046040120630
63	20	6 to 16	M8 to M20	40	120.5	0.3	5	1.6	20.063	9046040200630
100	12	2.8 to 10	M3 to M12	40	113	0.3	4	2.8	12.100	9046040121000
100	20	6 to 16	M8 to M20	40	127	0.3	5	2.9	20.100	9046040201000