

FRACTIONAL

GF300 B

Ball nose, FIREX® Coated, 2-flute

Includes Series

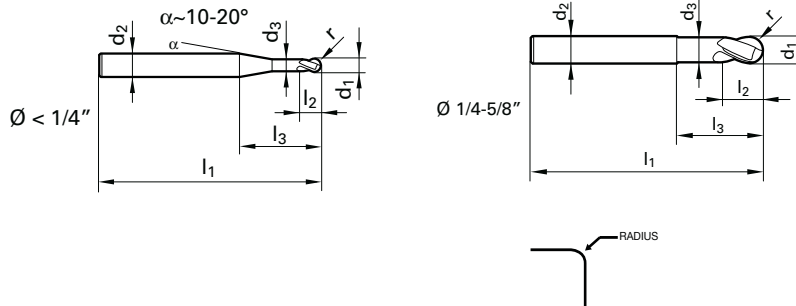
INCH

3101

3191



TYPE	H
HELIX ANGLE	30°
NUMBER of TEETH	2



d₁ tolerance h8
d₂ tolerance h6
See table on page 150

Diameter	Shank Diameter		OAL	LOC	Reach	Corner	HA	
(d1) Frac	(d2) Frac	(d3) Inch	(l1) Frac	(l2) Frac	*(l3) Frac	Radius Inch	EDP No.	Series Number
1/8	1/4	0.113	2	1/8	1/2	0.063	9031010031700	3101
1/8	1/4	0.113	2 1/2	1/8	1	0.063	9031910031700	3191
3/16	1/4	0.176	2	3/16	1/2	0.094	9031010047600	3101
3/16	1/4	0.176	2 1/2	3/16	1	0.094	9031910047600	3191
1/4	1/4	0.238	2	1/4	11/16	0.125	9031010063500	3101
1/4	1/4	0.238	3	1/4	1 1/2	0.125	9031910063500	3191
5/16	5/16	0.300	2	5/16	1 3/16	0.156	9031010079400	3101
5/16	5/16	0.300	3	5/16	1 1/2	0.156	9031910079400	3191
3/8	3/8	0.363	2 1/2	3/8	1 3/16	0.188	9031010095200	3101
3/8	3/8	0.363	3	3/8	1 1/2	0.188	9031910095200	3191
1/2	1/2	0.480	3	1/2	1 7/16	0.250	9031010127000	3101
1/2	1/2	0.480	4 1/2	1/2	2 3/4	0.250	9031910127000	3191
5/8	5/8	0.605	5	5/8	3	0.313	9031910158700	3191

* Indicates reduced neck style