

METRIC

GF300 B

Ball nose, FIREX® Coated, 2-flute

Includes Series

METRIC

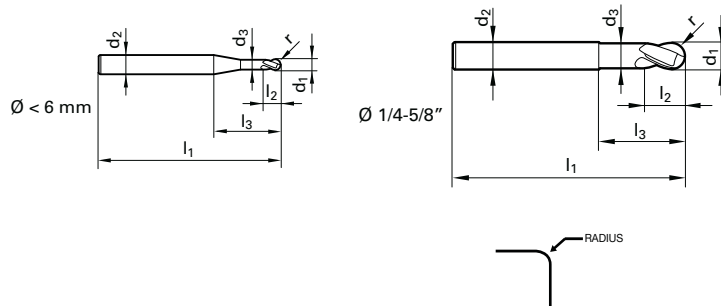
3359

3360

TYPE **H**

HELIX ANGLE **30°**

NUMBER of TEETH **2**



d_1 tolerance h8
 d_2 tolerance h6
 See table on page 150

Diameter	Shank Diameter		OAL	LOC	Reach	Corner	HA	
(d1) mm	(d2) mm	(d3) mm	(l1) mm	(l2) mm	* (l3) mm	Radius mm	EDP No.	Series Number
0.5	3.0	0.4	38	1	10	0.25	9033590005000	3359
0.8	3.0	0.7	38	1	10	0.40	9033590008000	3359
1.0	3.0	0.9	38	2	10	0.50	9033590010000	3359
1.5	3.0	1.4	38	2	10	0.75	9033590015000	3359
2.0	6.0	1.9	57	3	21	1.00	9033590020000	3359
3.0	6.0	2.7	57	5	21	1.50	9033590030000	3359
3.0	6.0	2.7	75	5	39	1.50	9033600030000	3360
4.0	6.0	3.7	57	6	21	2.00	9033590040000	3359
4.0	6.0	3.1	75	6	39	2.00	9033600040000	3360
5.0	6.0	4.7	57	8	21	2.50	9033590050000	3359
5.0	6.0	4.7	75	8	39	2.50	9033600050000	3360
6.0	6.0	5.7	57	9	21	3.00	9033590060000	3359
6.0	6.0	5.7	75	9	39	3.00	9033600060000	3360
8.0	8.0	7.7	63	12	27	4.00	9033590080000	3359
8.0	8.0	7.7	100	12	64	4.00	9033600080000	3360
10.0	10.0	9.5	72	15	32	5.00	9033590100000	3359
10.0	10.0	9.5	100	15	60	5.00	9033600100000	3360
12.0	12.0	11.5	83	18	38	6.00	9033590120000	3359
12.0	12.0	11.5	150	18	105	6.00	9033600120000	3360
16.0	16.0	15.5	92	24	44	8.00	9033590160000	3359
16.0	16.0	15.5	150	24	102	8.00	9033600160000	3360

* Indicates reduced neck style