

FRACTIONAL

ALUMI-TECH GA 200 A

2-flute

Includes Series

INCH

3174

3175

3874

3875



TYPE

W

HELIX ANGLE

45°

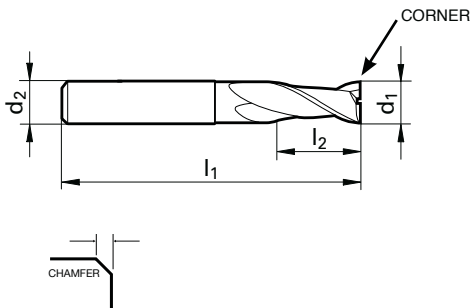
NUMBER of TEETH

2

d_1 tolerance h10

d_2 tolerance h6

See table on page 150



Diameter	Shank Diameter	OAL	LOC	Corner		HA		HA	
(d1) Frac	(d2) Frac	(l1) Frac	(l2) Frac	Chamfer Inch	Flutes	EDP No. Bright Finish	Series Number	EDP No. Super-A	Series Number
1/8	1/8	1 1/2	7/16	0.001	2	9031740031700	3174	9038740031700	3874
3/16	3/16	2	9/16	0.001	2	9031740047600	3174	9038740047600	3874
1/4	1/4	2 1/2	3/4	0.002	2	9031740063500	3174	9038740063500	3874
1/4	1/4	3	1 1/8	0.002	2	9031750063500	3175	9038750063500	3875
5/16	5/16	2 1/2	13/16	0.002	2	9031740079400	3174	9038740079400	3874
3/8	3/8	2 1/2	7/8	0.002	2	9031740095200	3174	9038740095200	3874
3/8	3/8	3	1 1/8	0.002	2	9031750095200	3175	9038750095200	3875
7/16	7/16	2 3/4	1	0.004	2	9031740111100	3174	9038740111100	3874
1/2	1/2	3	1	0.004	2	9031740127000	3174	9038740127000	3874
1/2	1/2	4 1/2	2	0.004	2	9031750127000	3175	9038750127000	3875
9/16	9/16	3 1/2	1 1/8	0.004	2	9031740142900	3174	9038740142900	3874
5/8	5/8	3 1/2	1 1/4	0.004	2	9031740158700	3174	9038740158700	3874
5/8	5/8	5	2 1/4	0.004	2	9031750158700	3175	9038750158700	3875
3/4	3/4	4	1 1/2	0.004	2	9031740190500	3174	9038740190500	3874
1	1	4	1 1/2	0.008	2	9031740254000	3174	9038740254000	3874