

EXCLUSIVE[®]LINE

HR 500 GT high-performance reamers

High-performance reamers



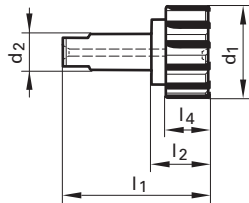
HR 500 GT as semi-standard

Straight shank ~ DIN 6535 HA tol. H6 with tang for optimal holding in extra length, slender hydraulic chuck Guhring no. 4290, but also in conventional hydraulic chucks or shrink fit chucks.

Minimum order quantity is 2.

When applying long hydraulic chucks with tang:
Eliminate play between chuck and reamer by rotating to stop prior to clamping.

**Intermediate sizes
short delivery**



Code no.	d1	d2 h6	l1	l2	l4	
	mm	mm	mm	mm	mm	
41.000	41.000	25.000	90.00	34.00	25.00	8
42.000	42.000	25.000	90.00	34.00	25.00	8
44.000	44.000	25.000	90.00	34.00	25.00	8
46.000	46.000	25.000	90.00	34.00	25.00	8
47.000	47.000	25.000	90.00	34.00	25.00	8
48.000	48.000	25.000	90.00	34.00	25.00	8
50.000	50.000	25.000	90.00	34.00	25.00	8
52.000	52.000	25.000	90.00	34.00	25.00	8
53.000	53.000	25.000	90.00	34.00	25.00	8
54.000	54.000	25.000	90.00	34.00	25.00	8
56.000	56.000	25.000	90.00	34.00	25.00	8
58.000	58.000	25.000	90.00	34.00	25.00	8
59.000	59.000	32.000	95.00	35.00	25.00	8
60.000	60.000	32.000	95.00	35.00	25.00	8
62.000	62.000	32.000	95.00	35.00	25.00	8
64.000	64.000	32.000	95.00	35.00	25.00	8
65.000	65.000	32.000	95.00	35.00	25.00	8
66.000	66.000	32.000	95.00	35.00	25.00	10
68.000	68.000	32.000	95.00	35.00	25.00	10
70.000	70.000	32.000	95.00	35.00	25.00	10
71.000	71.000	32.000	95.00	35.00	25.00	10
72.000	72.000	32.000	95.00	35.00	25.00	10
74.000	74.000	32.000	95.00	35.00	25.00	10
76.000	76.000	32.000	95.00	35.00	25.00	10

Cermet-tipped

HR 500
GT S



HR 500
GT D



Guhring no.

1040

1041

Surface finish

166

166

Discount group



H7



H7



Availability

●	●
●	●
●	●
●	●
●	●
●	●
●	●
●	●
●	●
●	●
●	●
●	●
●	●
●	●
●	●
●	●
●	●
●	●
●	●
●	●
●	●

When ordering intermediate hole sizes, fill out the questionnaire on page 31.