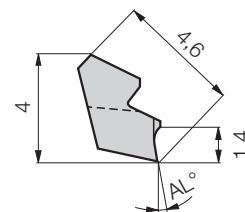
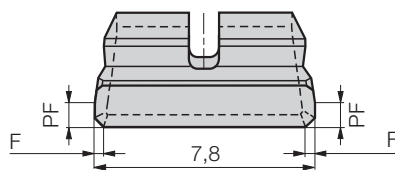
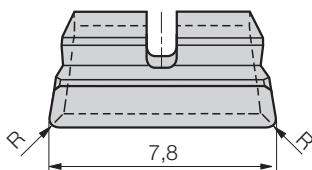


Inserts

precision ground

Insert W 3108-.... N

Carbide / carbide coated / PCD / CBN



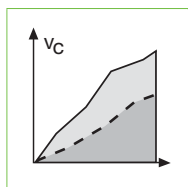
with radius (R) or with chamfer (F) and wiper geometry (PF)

Carbide						Part nr. 20295	Part nr. 20494	Part nr. 20496	Part nr. 20498
						uncoated	coated	coated	coated
Code	Drawing nr.	R	AL°	F	PF	K10	G12	G16	G26
31,080	W 3108-0314 1645 N		16	0.3x45°	0,9	●	○	○	○
31,081	W 3108-0414 1620 N	0.4	16			●	○	○	○
31,082	W 3108-0314 1045 N		10	0.3x45°	0,9	○	●	●	●
31,083	W 3108-0414 1000 N	0.4	10			○	●	●	●

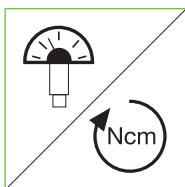
PCD						Part nr. 20299	Part nr. 20300	Part nr. 20301	Part nr. 20302	Part nr. 20303	Part nr. 20304
						PCD	PCD 3	PCD C	PCD 1	CBN	CBN 8
Code	Drawing nr.	R	AL°	F	PF	PCD	PCD 3	PCD C	PCD 1	CBN	CBN 8
31,080	W 3108-0314 1045 N		10	0.3x45°	0.9	●	○	○	○	○	○
31,081	W 3108-0314 0045 N		0	0.3x45°	0.9	●	○	○	○	○	○
31,082	W 3108-0414 0000 N	0.4	0			●	○	○	○	○	○
31,083	W 3108-0814 0000 N	0.8	0							○	○

● ex stock ○ in short time available

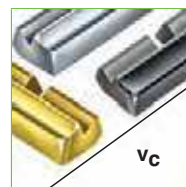
Ordering example: 1 piece W 3108-0314 1645 N K10 = Ordering number: 20295 31,080



Application recommendations
pages 40-43



Adjustment instruction
page 44



Geometry and grade selection
pages 37-39