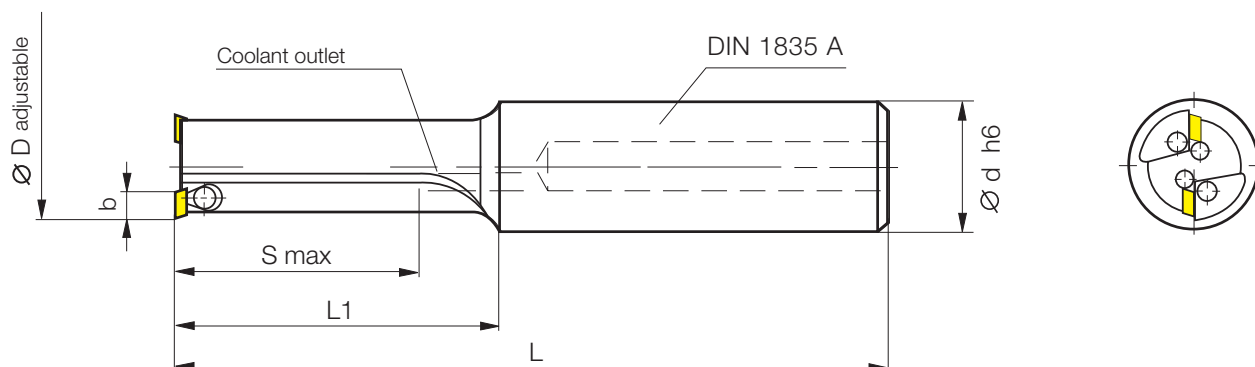


Fineboring tools



Tapered screw adjustment μm -accurate adjustable

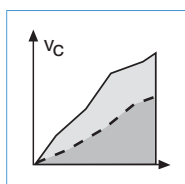
2 cutting edge $\varnothing 10 - 19 \text{ mm}$
internal coolant



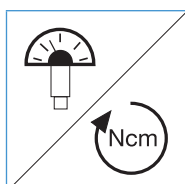
Part nr. 20012	Code	Drawing nr.		b	Ø D	Ø d	S	L ₁	L	Inserts
	10,200	H 1730-1020 2516 R	●	3	9.9 - 10.1	16	25	35	83	W 1730-... L
				3.25	10.4 - 10.6	→				W 1733-... L
	11,200	H 1730-1120 2516 R	●	3	10.9 - 11.1	16	25	35	83	W 1730-... L
				3.25	11.4 - 11.6	→				W 1733-... L
	12,200	H 1730-1220 3016 R	●	3	11.9 - 12.1	16	30	40	88	W 1730-... L
				3.25	12.4 - 12.6	→				W 1733-... L
	13,200	H 1730-1320 3016 R	●	3	12.9 - 13.1	16	30	40	88	W 1730-... L
				3.25	13.4 - 13.6	→				W 1733-... L
	14,200	H 1730-1420 3516 R	●	3	13.9 - 14.1	16	35	45	93	W 1730-... L
				3.25	14.4 - 14.6	→				W 1733-... L
	15,200	H 2850-1520 3520 R	●	5	14.7 - 15.3	20	35	45	95	W 2850-...L
				5.25	15.2 - 15.8	→				W 2853-...L
	16,200	H 2850-1620 4020 R	●	5	15.7 - 16.3	20	40	50	100	W 2850-...L
				5.25	16.2 - 16.8	→				W 2853-...L
	17,200	H 2850-1720 4020 R	●	5	16.7 - 17.3	20	40	50	100	W 2850-...L
				5.25	17.2 - 17.8	→				W 2853-...L
	18,200	H 2850-1820 4520 R	●	5	17.7 - 18.3	20	45	55	105	W 2850-...L
				5.25	18.2 - 18.8	→				W 2853-...L
	19,200	H 2850-1920 4520 R	●	5	18.7 - 19.3	20	45	55	105	W 2850-...L
				5.25	19.2 - 19.8	→				W 2853-...L

● ex stock

Ordering example: 1 piece H 1730-1020 2516 R = Ordering number: 20012 10,200



Application recommendations page 77



Adjustment instruction page 57



Form „Request for customer specific tools“ page 130