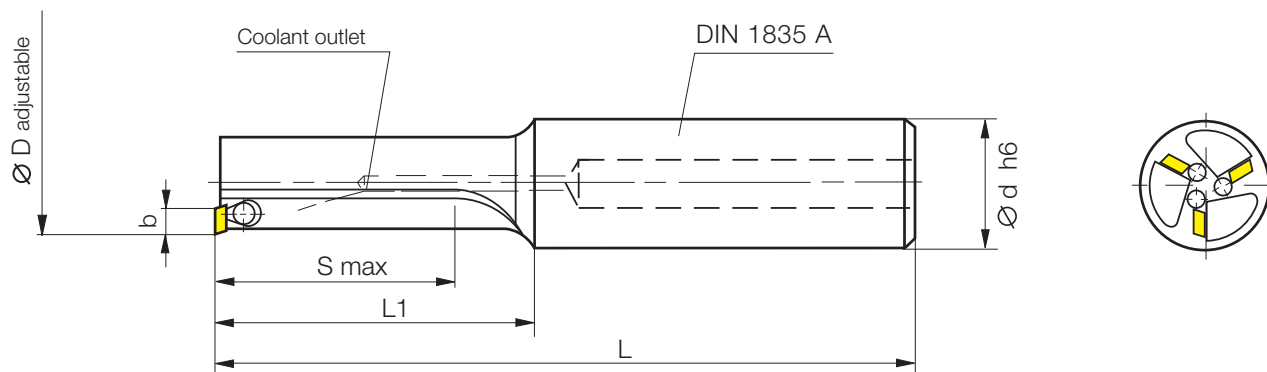




Fineboring tools

Tapered screw adjustment μm -accurate adjustable

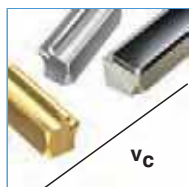
3 cutting edge $\varnothing 15 - 25 \text{ mm}$
internal coolant



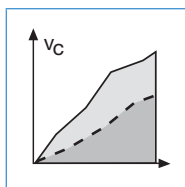
Part nr. 20013									
Code	Drawing nr.		b	$\varnothing D$	$\varnothing d$	S	L ₁	L	Inserts
15,200	H 1730-1520 3520 R	●	3	14.9 - 15.1	20	35	45	95	W 1730-... L
			3.25	15.4 - 15.6	→				W 1733-... L
16,200	H 1730-1620 4020 R	●	3	15.9 - 16.1	20	40	50	100	W 1730-... L
			3.25	16.4 - 16.6	→				W 1733-... L
17,200	H 1730-1720 4020 R	●	3	16.9 - 17.1	20	40	50	100	W 1730-... L
			3.25	17.4 - 17.6	→				W 1733-... L
18,200	H 1730-1820 4520 R	●	3	17.9 - 18.1	20	45	55	105	W 1730-... L
			3.25	18.4 - 18.6	→				W 1733-... L
19,200	H 1730-1920 4520 R	●	3	18.9 - 19.1	20	45	55	105	W 1730-... L
			3.25	19.4 - 19.6	→				W 1733-... L
20,200	H 2850-2020 5020 R	●	5	19.7 - 20.3	20	50	64	115	W 2850-...L
			5.25	20.2 - 20.8	→				W 2853-...L
21,200	H 2850-2120 5020 R	●	5	20.7 - 21.3	20	50	64	115	W 2850-...L
			5.25	21.2 - 21.8	→				W 2853-...L
22,200	H 2850-2220 5520 R	●	5	21.7 - 22.3	20	55	69	120	W 2850-...L
			5.25	22.2 - 22.8	→				W 2853-...L
23,200	H 2850-2320 5520 R	●	5	22.7 - 23.3	20	55	69	120	W 2850-...L
			5.25	23.2 - 23.8	→				W 2853-...L
24,200	H 2850-2420 6020 R	●	5	23.7 - 24.3	20	60	74	125	W 2850-...L
			5.25	24.2 - 24.8	→				W 2853-...L
25,200	H 2850-2520 6020 R	●	5	24.7 - 25.3	20	60	74	125	W 2850-...L
			5.25	25.2 - 25.8	→				W 2853-...L

● ex stock

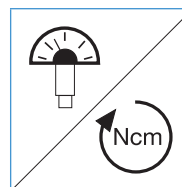
Ordering example: 1 piece H 1730-1520 3520 R = Ordering number: 20013 15,200



Geometry and grade selection pages 75-76



Application recommendations page 77



Adjustment instruction page 57