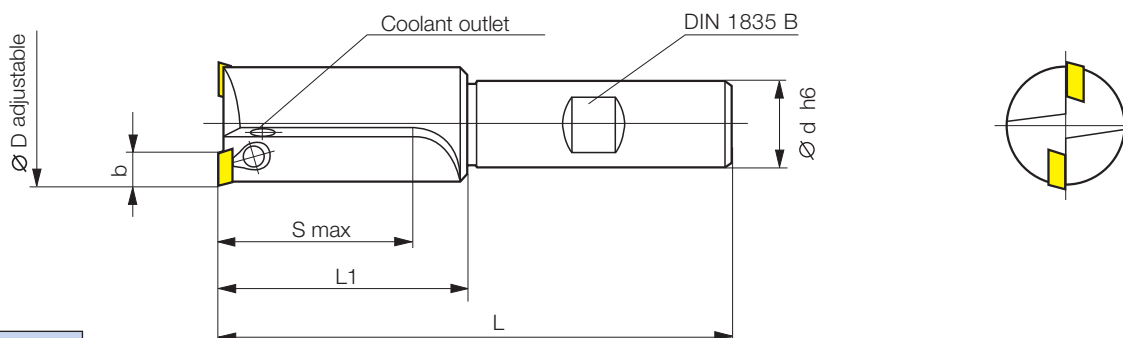


# Fineboring tools



Radial adjustment,  $\mu\text{m}$ -accurate adjustable

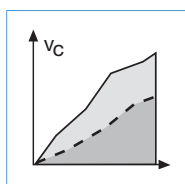
2 cutting edges  $\varnothing 10 - 40 \text{ mm}$   
internal coolant



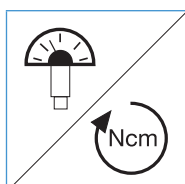
Part nr. 20022	Code	Drawing nr.		b	$\varnothing D$	$\varnothing d$	S	L <sub>1</sub>	L	Inserts
	10,000	H 1035-1000 2516 R	•	3.9	10 - 11	16	25	35	83	W 1035-... L
	11,000	H 1035-1100 2516 R	•	3.9	11 - 12	16	25	35	83	↓
	12,000	H 1035-1200 3016 R	•	3.9	12 - 13	16	30	40	88	
	13,000	H 1035-1300 3016 R	•	3.9	13 - 14	16	30	40	88	↓
	14,000	H 2850-1400 3516 R	•	5	14 - 15	16	35	45	93	W 2850-... L
	15,000	H 2850-1500 3516 R	•	5	15 - 16	16	35	45	93	↓
	16,000	H 2850-1600 4016 R	•	5	16 - 17	16	40	50	98	
	17,000	H 2850-1700 4016 R	•	5	17 - 18	16	40	50	98	↓
	18,000	H 2850-1800 4516 R	•	5	18 - 19	16	45	55	103	
	19,000	H 2850-1900 4516 R	•	5	19 - 20	16	45	55	103	↓
	20,000	H 3570-2000 5020 R	•	7	20 - 22	20	50	65	115	W 357-...L
	22,000	H 3570-2200 5520 R	•	7	22 - 24	20	55	70	120	↓
	24,000	H 3570-2400 6020 R	•	7	24 - 26	20	60	75	125	↓
	26,000	H 4090-2600 6520 R	•	9	26 - 28	20	65	80	130	W 409-...L
	28,000	H 4090-2800 7020 R	•	9	28 - 30	20	70	85	135	↓
	30,000	H 4090-3000 7520 R	•	9	30 - 32	20	75	90	140	
	32,000	H 4090-3200 8020 R	•	9	32 - 34	20	80	95	145	↓
	34,000	H 4090-3400 8525 R	•	9	34 - 36	25	85	105	161	
	36,000	H 4090-3600 9025 R	•	9	36 - 38	25	90	110	166	↓
	38,000	H 4090-3800 9525 R	•	9	38 - 40	25	95	115	171	↓

● ex stock

Ordering example: 1 piece H 1035-1000 2516 R = Ordering number: 20022 10,000



Applications recommendations page 77



Adjustment instruction page 66



Form „Request for customer specific tools“ page 130