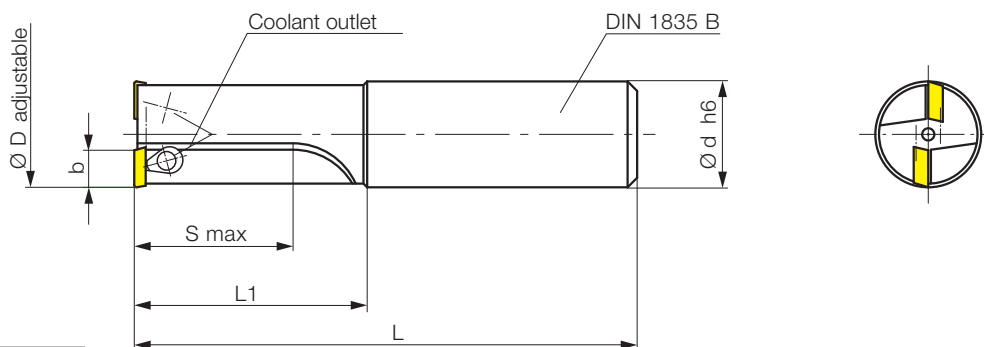


# Fineboring tools

## Radial adjustment short version (1,5xD)



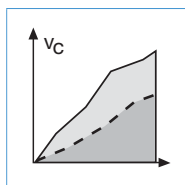
2 cutting edges  $\varnothing 10 - 40$  mm  
internal coolant, Shank DIN 1835 A



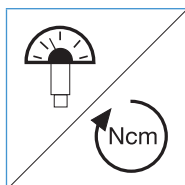
Part nr. 20024	Code	Drawing nr.		b	$\varnothing D$	$\varnothing d$	S	L <sub>1</sub>	L	Inserts
10,000	H 1035-1000 1516 R	●	3,9	10 - 11	16	15	25	73	W 1035-... L	
11,000	H 1035-1100 1716 R	●	3,9	11 - 12	16	17	27	75	↓	
12,000	H 1035-1200 1816 R	●	3,9	12 - 13	16	18	28	76		
13,000	H 1035-1300 2016 R	●	3,9	13 - 14	16	20	30	78	↓	
14,000	H 2850-1400 2116 R	●	5	14 - 15	16	21	31	79	W 2850-... L	
15,000	H 2850-1500 2316 R	●	5	15 - 16	16	23	33	81	↓	
16,000	H 2850-1600 2416 R	●	5	16 - 17	16	24	34	82		
17,000	H 2850-1700 2616 R	●	5	17 - 18	16	26	36	84		
18,000	H 2850-1800 2716 R	●	5	18 - 19	16	27	37	85		
19,000	H 2850-1900 2916 R	●	5	19 - 20	16	29	39	87	↓	
20,000	H 3570-2000 3020 R	●	7	20 - 22	20	30	45	95	W 3570-... L	
22,000	H 3570-2200 3320 R	●	7	22 - 24	20	33	48	98	↓	
24,000	H 3570-2400 3620 R	●	7	24 - 26	20	36	51	101	↓	
26,000	H 4090-2600 3925 R	●	9	26 - 28	25	39	54	110	W 4090-... L	
28,000	H 4090-2800 4225 R	●	9	28 - 30	25	42	57	113	↓	
30,000	H 4090-3000 4532 R	●	9	30 - 32	32	45	63	123		
32,000	H 4090-3200 4832 R	●	9	32 - 34	32	48	66	126		
34,000	H 4090-3400 5132 R	●	9	34 - 36	32	51	69	129		
36,000	H 4090-3600 5432 R	●	9	36 - 38	32	54	72	132		
38,000	H 4090-3800 5732 R	●	9	38 - 40	32	57	75	135	↓	

● ex stock

Ordering example: 1 piece H 1035-1000 1516 R = Ordering number: 20024 10,000



Applications  
recommendations  
page 77



Adjustment  
instruction  
page 66



Form „Request for  
customer specific  
tools“  
page 130