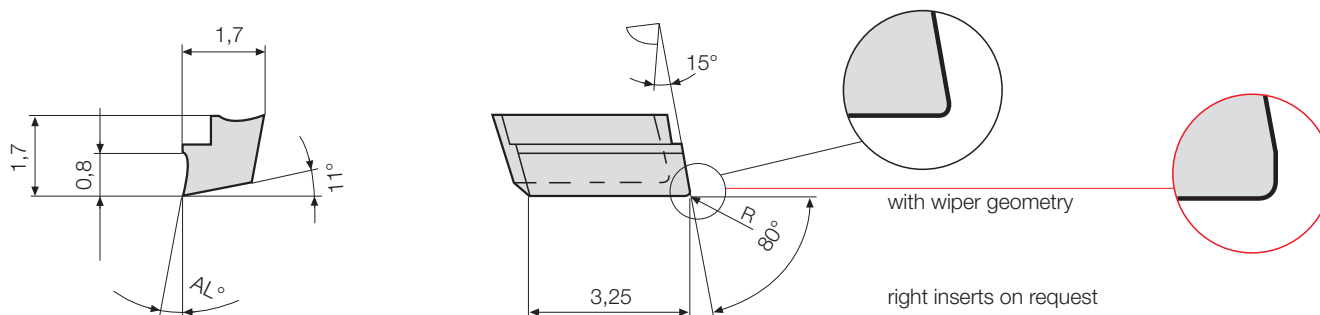


Inserts precision ground for fineboring tools and cartridges

Insert W 1733-.... L



				Part nr. 20128	Part nr. 20129 uncoated	Part nr. 20130	Part nr. 20420	Part nr. 20422 coated	Part nr. 20424
Code	Drawing nr.	R	AL°	P10	P40	K10	G12	G16	G26
17,330	W 1733-0008 1000 L	0.05	10	●	●	●	●	●	●
17,331	W 1733-0208 1000 L	0.2	10	●	●	●	●	●	●
17,332	W 1733-0008 1620 L	0.05	16	○	○	●	●	○	●
17,333	W 1733-0208 1620 L	0.2	16	○	○	●	●	○	●

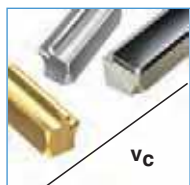
				Part nr. 20134	Part nr. 20135 uncoated	Part nr. 20136	Part nr. 20425	Part nr. 20427 coated	Part nr. 20429
Code	Drawing nr.	R	AL°	P10	P40	K10	G12	G16	G26
17,330	W 1733-0008 1011 L	0.05	10	●	●	●	●	●	●
17,331	W 1733-0208 1011 L	0.2	10	●	●	●	●	●	●
17,332	W 1733-0008 1611 L	0.05	16	○	●	●	●	○	●
17,333	W 1733-0208 1611 L	0.2	16	○	●	●	●	○	●

				Part nr. 20140
Code	Drawing nr.	R	AL°	PCD
17,330	W 1733-0000 0000 L	0.05	0	●
17,331	W 1733-0200 0000 L	0.2	0	●
17,332	W 1733-0400 0000 L	0.4	0	●

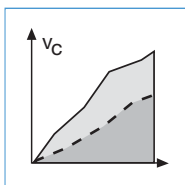
				Part nr. 20141
Code	Drawing nr.	R	AL°	PCD
17,330	W 1733-0000 0011 L	0.05	0	●
17,331	W 1733-0200 0011 L	0.2	0	●
17,332	W 1733-0400 0011 L	0.4	0	●

● ex stock ○ on request

Ordering example: 1 piece W 1733-0008 1000 L G12 = Ordering number: 20420 17,330



Grade selections
and insert
geometries
pages 75-76



Application
recommendations
page 77



Insert
PCD-fullface
W 1733-.... L