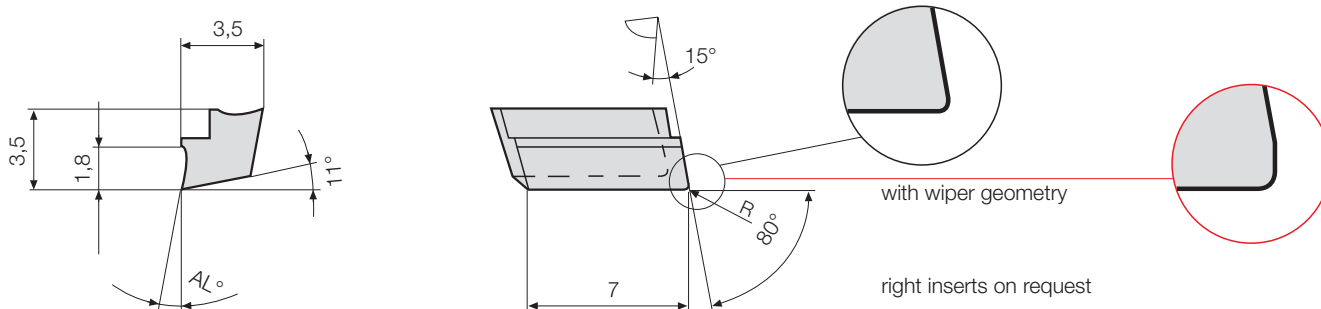


Inserts precision ground for fineboring tools and cartridges



Insert W 3570-.... L



				Part nr. 20176	Part nr. 20177 uncoated	Part nr. 20178	Part nr. 20450	Part nr. 20452 coated	Part nr. 20454
Code	Drawing nr.	R	AL°	P10	P40	K10	G12	G16	G26
35,700	W 3570-0218 1000 L	0.2	10	●	●	●	●	●	●
35,701	W 3570-0418 1000 L	0.4	10	●	●	●	●	●	●
35,702	W 3570-0218 1620 L	0.2	16	○	●	●	●	○	●
35,703	W 3570-0418 1620 L	0.4	16	○	●	●	●	○	●

				Part nr. 20182	Part nr. 20183 uncoated	Part nr. 20184	Part nr. 20455	Part nr. 20457 coated	Part nr. 20459
Code	Drawing nr.	R	AL°	P10	P40	K10	G12	G16	G26
35,700	W 3570-0218 1011 L	0.2	10	●	●	●	●	●	●
35,701	W 3570-0418 1011 L	0.4	10	●	●	●	●	●	●
35,702	W 3570-0218 1611 L	0.2	16	○	●	●	●	○	●
35,703	W 3570-0418 1611 L	0.4	16	○	●	●	●	○	●

				Part nr. 20188
Code	Drawing nr.	R	AL°	PCD
35,700	W 3570-0013 0000 L	0.05	0	●
35,701	W 3570-0213 0000 L	0.2	0	●
35,702	W 3570-0413 0000 L	0.4	0	●

				Part nr. 20190
Code	Drawing nr.	R	AL°	PCD
35,700	W 3570-0013 0011 L	0.05	0	●
35,701	W 3570-0213 0011 L	0.2	0	●
35,702	W 3570-0413 0011 L	0.4	0	●

● ex stock ○ on request

Ordering example: 1 piece W 3570-0218 1000 L G16 = Ordering number: 20452 35,700



Insert
carbide coated
W 3570-.... L



Insert
PCD-tipped
W 3570-.... L