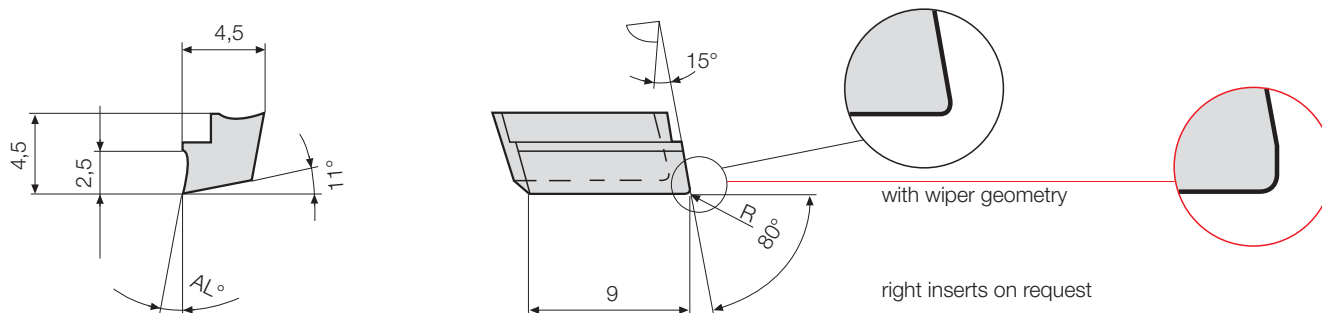


# Inserts precision ground for fineboring tools and cartridges

## Insert W 4090-.... .... L



				Part nr. 20192	Part nr. 20193 uncoated	Part nr. 20194	Part nr. 20460	Part nr. 20462 coated	Part nr. 20464
Code	Drawing nr.	R	AL°	P10	P40	K10	G12	G16	G26
40,900	W 4090-0225 1000 L	0.2	10	●	●	●	●	●	●
40,901	W 4090-0425 1000 L	0.4	10	●	●	●	●	●	●
40,902	W 4090-0225 1620 L	0.2	16	○	●	●	●	○	●
40,903	W 4090-0425 1620 L	0.4	16	○	●	●	●	○	●

				Part nr. 20198	Part nr. 20199 uncoated	Part nr. 20200	Part nr. 20465	Part nr. 20467 coated	Part nr. 20469
Code	Drawing nr.	R	AL°	P10	P40	K10	G12	G16	G26
40,900	W 4090-0225 1011 L	0.2	10	●	●	●	●	●	●
40,901	W 4090-0425 1011 L	0.4	10	●	●	●	●	●	●
40,902	W 4090-0225 1611 L	0.2	16	○	●	●	●	○	●
40,903	W 4090-0425 1611 L	0.4	16	○	●	●	●	○	●

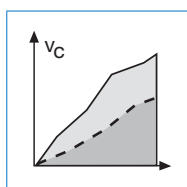
				Part nr. 20204
Code	Drawing nr.	R	AL°	PCD
40,900	W 4090-0018 0000 L	0.05	0	●
40,901	W 4090-0218 0000 L	0.2	0	●
40,902	W 4090-0418 0000 L	0.4	0	●
40,903	W 4090-0818 0000 L	0.8	0	○

				Part nr. 20206
Code	Drawing nr.	R	AL°	PCD
40,900	W 4090-0018 0011 L	0.05	0	●
40,901	W 4090-0218 0011 L	0.2	0	●
40,902	W 4090-0418 0011 L	0.4	0	●

● ex stock ○ on request

Ordering example: 1 piece W 4090-0225 1000 L G12 = Ordering number: 20460 40,900



Application  
recommendations  
page 77



Insert  
carbide coated  
W 4090-.... .... L



Insert  
PCD-tipped  
W 4090-.... .... L