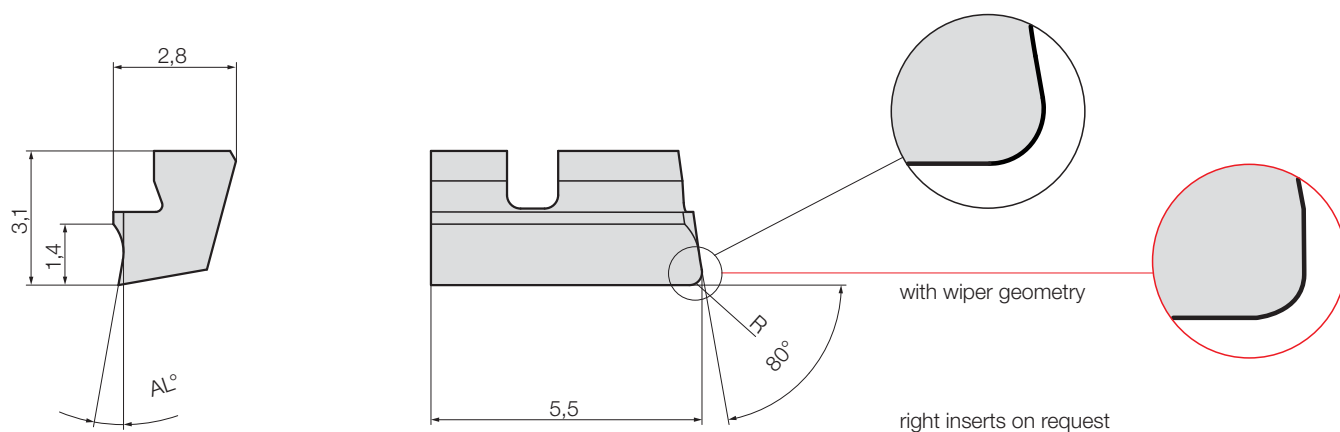


Inserts precision ground for customer specific fine boring tools

Type W 2006-.... L HM / HM-coated

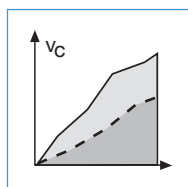


				Part nr. 20334	Part nr. 20335	Part nr. 20477	Part nr. 20479
				uncoated		coated	
Code	Drawing nr.	R	AL°	P40	K10	G12	G16
20,060	W 2006-0214 1000 L	0,2	10	●	●	●	●
20,062	W 2006-0414 1000 L	0,4	10	●	●	●	●
20,061	W 2006-0214 1620 L	0,2	16	●	●	●	●
20,063	W 2006-0414 1620 L	0,4	16	●	●	●	●

				Part nr. 20338	Part nr. 20339	Part nr. 20481	Part nr. 20483
with wiper geometry				uncoated		coated	
Code	Drawing nr.	R	AL°	P40	K10	G12	G16
20,060	W 2006-0214 1011 L	0,2	10	●	●	●	●
20,062	W 2006-0414 1011 L	0,4	10	●	●	●	●
20,061	W 2006-0214 1611 L	0,2	16	●	●	●	●
20,063	W 2006-0414 1611 L	0,4	16	●	●	●	●

● ex stock

Ordering example: 1 piece W 2006-0214 1000 L G12 = Ordering number: 20477 20,060



Application
recommendations
page 77



Form „Request for
customer specific
tools“
page 130