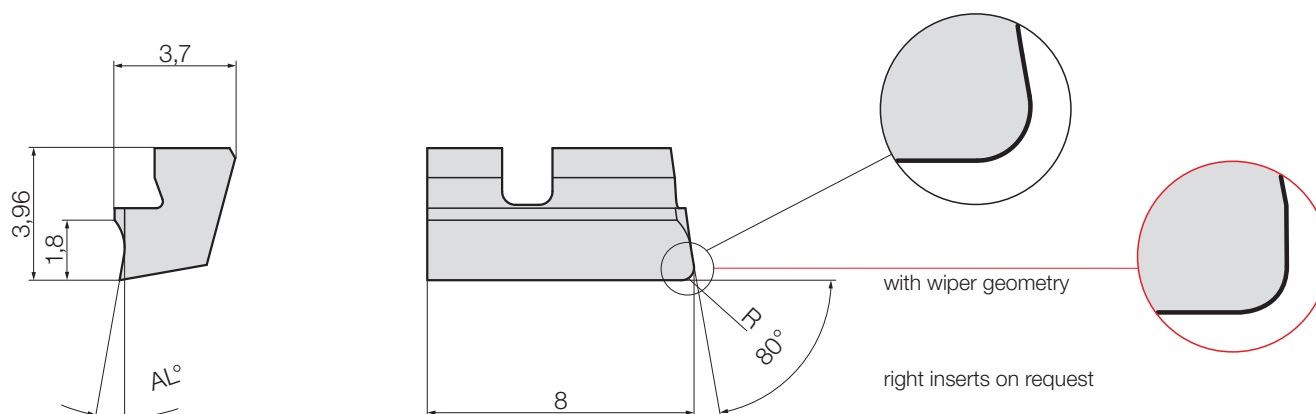


# Inserts precision ground for customer specific fine boring tools

## Typ W 3006-.... .... L

HM / HM-coated



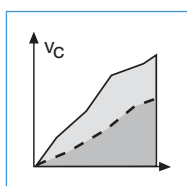
				Part nr. 20358	Part nr. 20359	Part nr. 20485	Part nr. 20487
				uncoated		coated	
Code	Drawing nr.	R	AL°	P40	K10	G12	G16
30,060	W 3006-0218 1000 L	0,2	10	○	●	●	●
30,062	W 3006-0418 1000 L	0,4	10	●	●	●	●
30,061	W 3006-0218 1620 L	0,2	16	○	●	●	●
30,063	W 3006-0418 1620 L	0,4	16	●	●	●	●

				Part nr. 20371	Part nr. 20347	Part nr. 20511	Part nr. 20512
with wiper geometry				uncoated		coated	
Code	Drawing nr.	R	AL°	P40	K10	G12	G16
30,060	W 3006-0218 1011 L	0,2	10	○	●	●	●
30,062	W 3006-0418 1011 L	0,4	10	●	●	●	●
30,061	W 3006-0218 1611 L	0,2	16	○	●	●	●
30,063	W 3006-0418 1611 L	0,4	16	●	●	●	●

● ex stock ○ on request

Ordering example: 1 piece W 3006-0218 1000 L G12 = Ordering number: 20485 30,060



Application  
recommendations  
page 77



Form „Request for  
customer specific  
tools“  
page 130