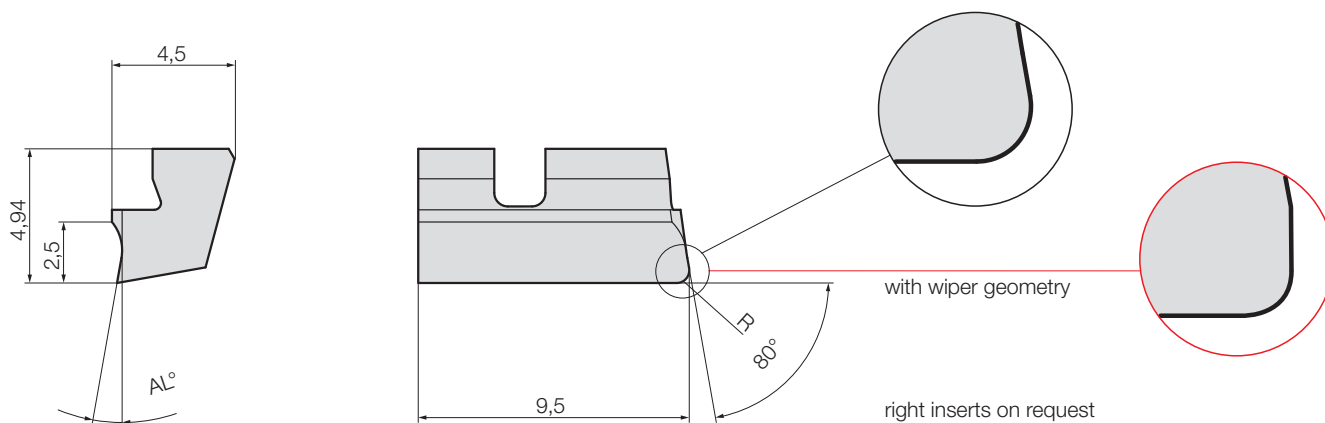


# Inserts precision ground for customer specific fine boring tools

## Type W 4006-.... .... L

HM / HM-coated



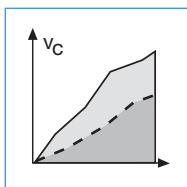
				Part nr. <b>20353</b> uncoated	Part nr. <b>20504</b> coated	Part nr. <b>20507</b> coated
Code	Drawing nr.	R	AL°	K10	G12	G16
40,061	W 4006-0225 1000 L	0,2	10	●	●	●
40,062	W 4006-0425 1000 L	0,4	10	●	●	●
40,063	W 4006-0225 1620 L	0,2	16	●	●	●
40,064	W 4006-0425 1620 L	0,4	16	●	●	●

				Part nr. <b>20354</b> uncoated	Part nr. <b>20505</b> coated	Part nr. <b>20508</b> coated
with wiper geometry				K10	G12	G16
Code	Drawing nr.	R	AL°	K10	G12	G16
40,061	W 4006-0225 1011 L	0,2	10	●	●	●
40,062	W 4006-0425 1011 L	0,4	10	●	●	●
40,063	W 4006-0225 1611 L	0,2	16	●	●	●
40,064	W 4006-0425 1611 L	0,4	16	●	●	●

● ex stock

Ordering example: 1 piece W 4006-0225 1000 L G12 = Ordering number: 20504 40,061



Application  
recommendations  
page 77



Form „Request for  
customer specific  
tools“  
page 130